

Purrble®

An interactive friend who helps us find calm



Dynamic heartbeat that shows emotion



Sensors that respond to touch & fidgeting

PURRR

Gentle, soothing purr



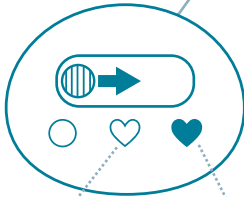
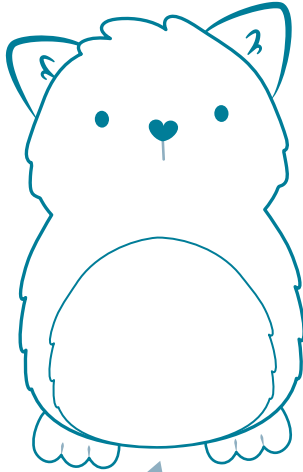
Ultra-soft fur



Simple language of sighs, giggles & grunts



Custom-dyed fabric



Power On

Slide the switch to choose the vibration strength of Purrble's heartbeat.



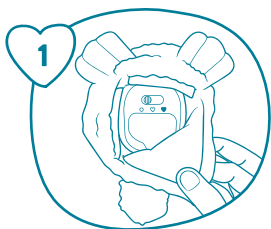
**Soft
vibration**



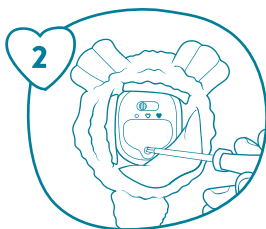
**Strong
vibration**

Purrble conserves battery life by going to sleep when not in use. Leave Purrble switched on unless you will not be playing for a week or more.

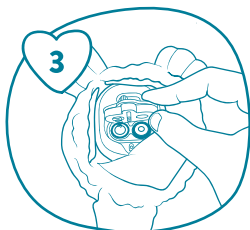
Battery Changing Instructions



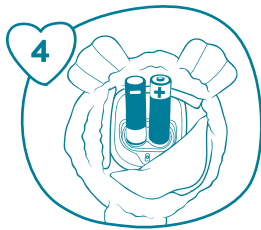
Open the hook-and-loop fastener on the bottom of Purrble.



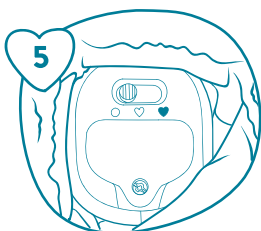
Unscrew the battery cover using a Phillips/cross-head screwdriver.



Remove the battery cover, then remove and discard the two batteries.



Replace with two new 1.5V AA alkaline batteries. Be sure to insert the batteries correctly by matching the + and - markings.



Replace the battery cover. Tighten the screw and close the hook-and-loop fastener.

Calm is within us.

Sometimes we just need a little help finding it.

Purrble is one of a kind - a research-based tool, disguised as a cuddly creature! Purrble blends the worlds of social robotics, psychology, and social-emotional learning to create a companion who helps you find calm and build emotion regulation skills.

Emotion regulation is what helps us stay calm and focused when big feelings, like anxiety or anger, bubble up and pull us off track. Learning emotion regulation is a lot like learning to ride a bike — the more you practice the skill, the more it becomes part of who you are.

Tips from people of all ages who love Purrble:



Create a nighttime routine

We've heard that calming Purrble helps people wind down for sleep. Try taking deep breaths while soothing Purrble. You can even add aromatherapy or soft lights to this routine.



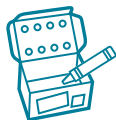
Keep Purrble nearby

Many people reach for Purrble specifically to help during moments of stress, overwhelm, anxiety, and other big emotions. Keep Purrble nearby or in a designated place, so you can reach for them easily during these moments.



Tune into the details

Hold Purrble to your chest or ear, and focus your attention on their soft heartbeat, quiet language, and the feeling of their ears, feet, and belly. Purrble will even snore softly when falling asleep after inactivity!



Build a bond

Finding calm with your friend works best when you share a special bond with them. Name your Purrble and decorate their cozy box. Go wild!

Contents

- Purrble
- 2 AA batteries (installed)
- “A note from Dr. Treebury” activity card

Designed by Experts

sproutel

Committee
for Children®

IMPORTANT: BATTERY INFORMATION

Batteries should be replaced by an adult.

▲ CAUTION

1. SAFE HANDLING

- a. Keep batteries and tools well out of reach of children.
- b. Batteries must only be inserted by an adult.

2. TO AVOID BATTERY LEAKAGE

- a. Use only 1.5 V “AA” (LR6) alkaline batteries.
- b. Carefully insert the batteries correctly by matching the + and - polarity markings.
- c. Do not mix old batteries and new batteries or standard (carbon-zinc) with alkaline batteries.
- d. Remove exhausted or dead batteries from the product.
- e. Remove batteries if the product is not to be used for a long time.
- f. Do not short-circuit the + and - terminals.
- g. RECHARGEABLE BATTERIES: Do not mix these with any other types of batteries. Always remove from the product before recharging. Recharge batteries under adult supervision.
DO NOT RECHARGE OTHER TYPES OF BATTERIES.

3. Should this product cause, or be affected by, local electrical interference, move it away from other equipment. Reset (switching off and back on again or removing and re-inserting batteries) if necessary.

4. Properly dispose of batteries — check call2recycle.org for options near you.

 x2 1.5V AA ALKALINE BATTERIES INCLUDED. Replace with 2x 1.5V “AA” size alkaline batteries.
Phillips/cross-head screwdriver (not included) needed to replace batteries.

▲ DANGER TO PREVENT ELECTRIC SHOCK

Do not immerse Purrble in water! Surface wash only.
Purrble’s fur can be cleaned using a slightly damp cloth or disinfectant wipe.

FCC COMPLIANCE STATEMENT

This device complies with part 15 of the FCC Rules. Operation is subject to the following two conditions: (1) This device may not cause harmful interference, and (2) this device must accept any interference received, including interference that may cause undesired operation.

Note: This equipment has been tested and found to comply with the limits for a Class B digital device, pursuant to part 15 of the FCC Rules. These limits are designed to provide reasonable protection against harmful interference in a residential installation. This equipment generates, uses, and can radiate radio frequency energy and, if not installed and used in accordance with the instructions, may cause harmful interference to radio communications. However, there is no guarantee that interference will not occur in a particular installation. If this equipment does cause harmful interference to radio or television reception, which can be determined by turning the equipment off and on, the user is encouraged to try to correct the interference by one or more of the following measures:

- Reorient or relocate the receiving antenna.
- Increase the separation between the equipment and receiver.
- Connect the equipment to an outlet on a circuit different from that to which the receiver is connected.
- Consult the dealer or an experienced radio/TV technician for help.

WARNING: Changes or modifications to this unit not expressly approved by the party responsible for compliance could void the user’s authority to operate the equipment.

DESIGNED IN RHODE ISLAND, MADE IN CHINA

Ages 3 - 103

Product and colors may vary. Retain this information for future reference.

Includes: Purrble and Printed Materials.

Compliant with Standard Consumer Safety Specification for Toy Safety

ASTM F963-17 & EN-71

All New Materials. Polyester Fibers, Cotton Lining.

© 2021 Committee for Children. All Rights Reserved.

Designed and Manufactured by Sproutel, Inc. Providence, RI 02909 USA

<https://www.purrble.com>, support@purrble.com

CE UK
CA
Model F42D