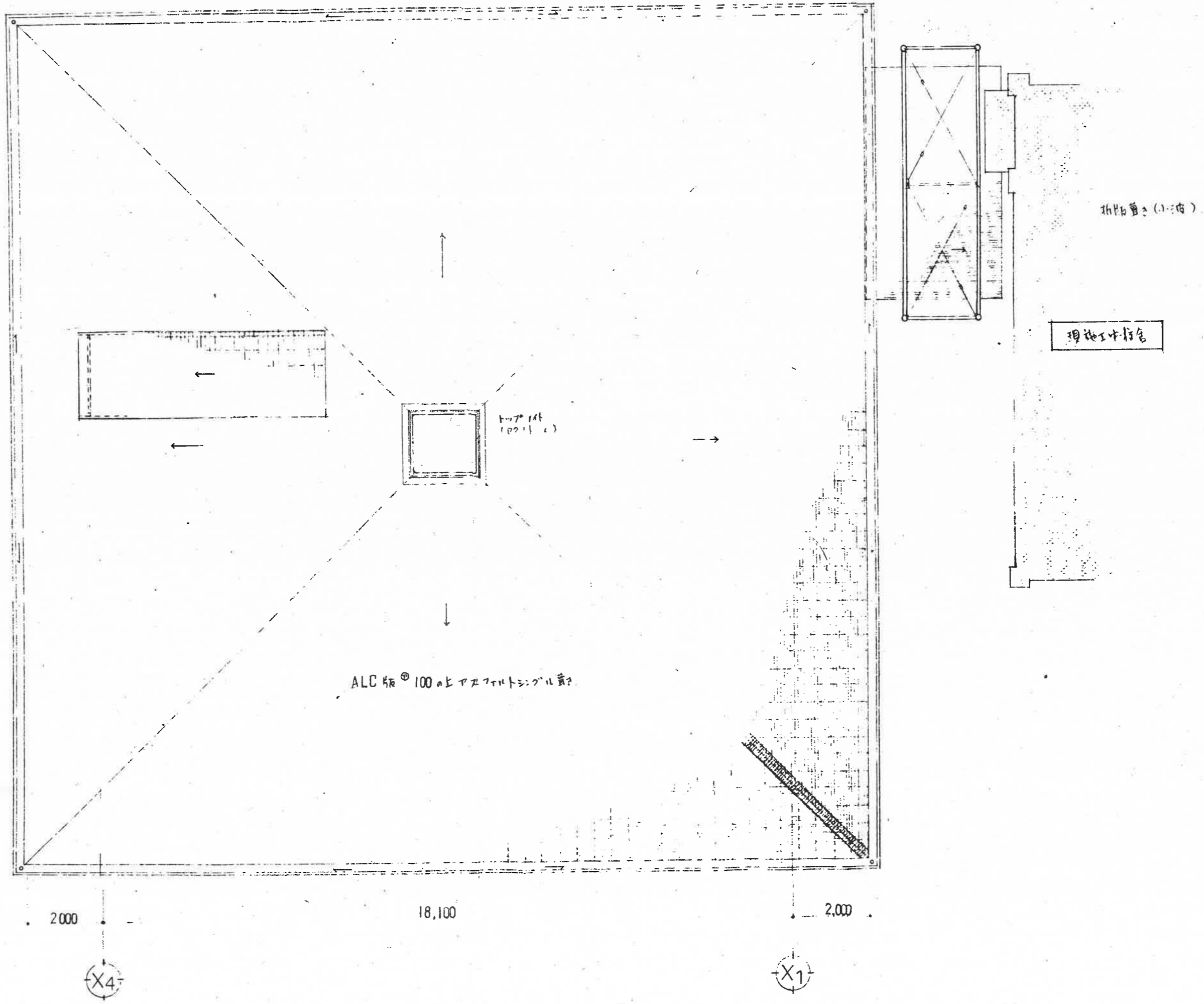


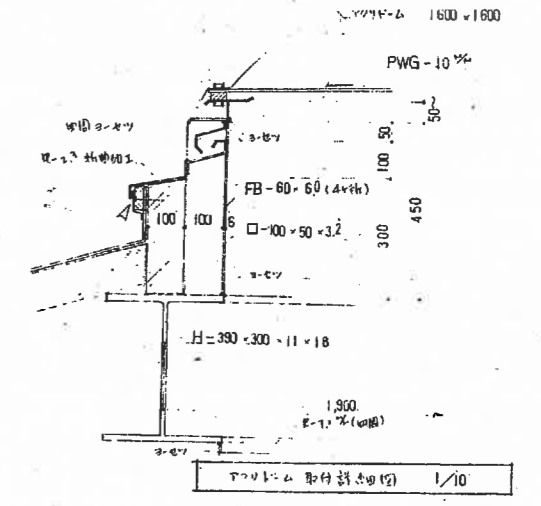
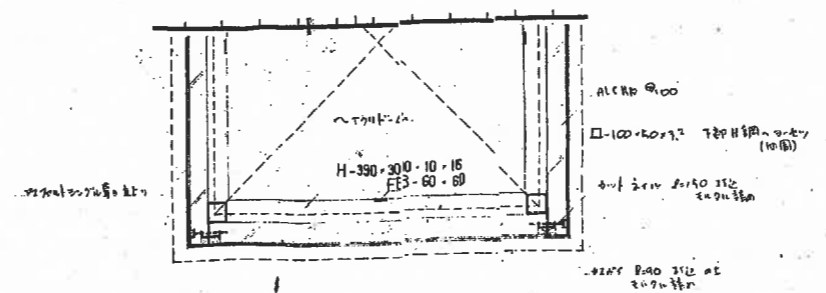
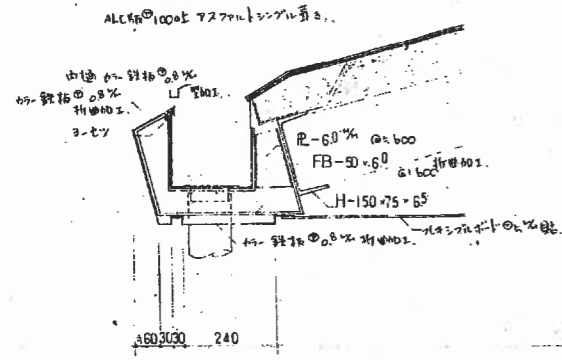
1 階平面図

(○) 10mm (20mm) 半径の ( ) 材は柱・管底を示す。  
 (●) 換気扇 (設備工事) 取付位置を示す。換取付の (工事)。



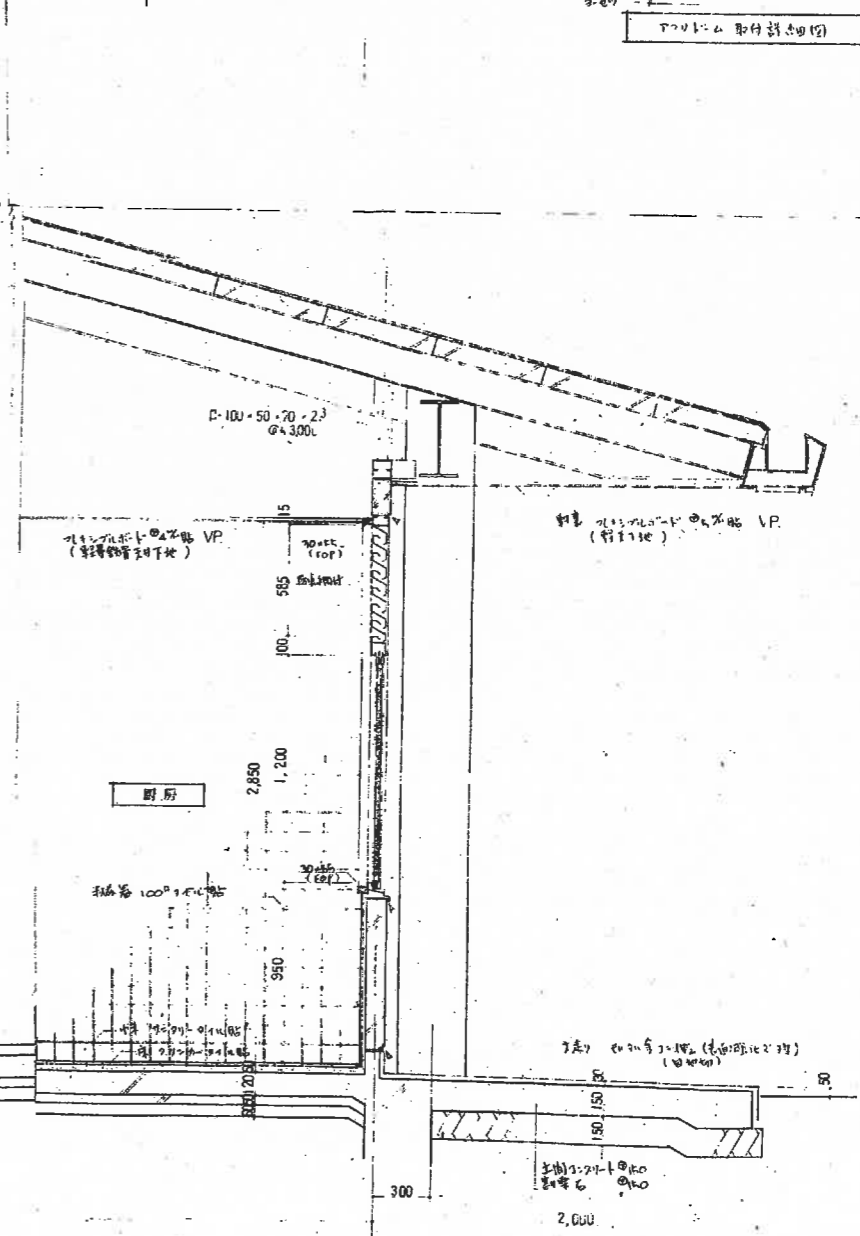
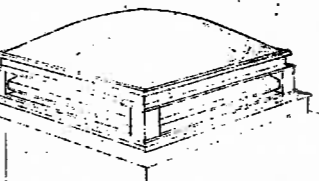
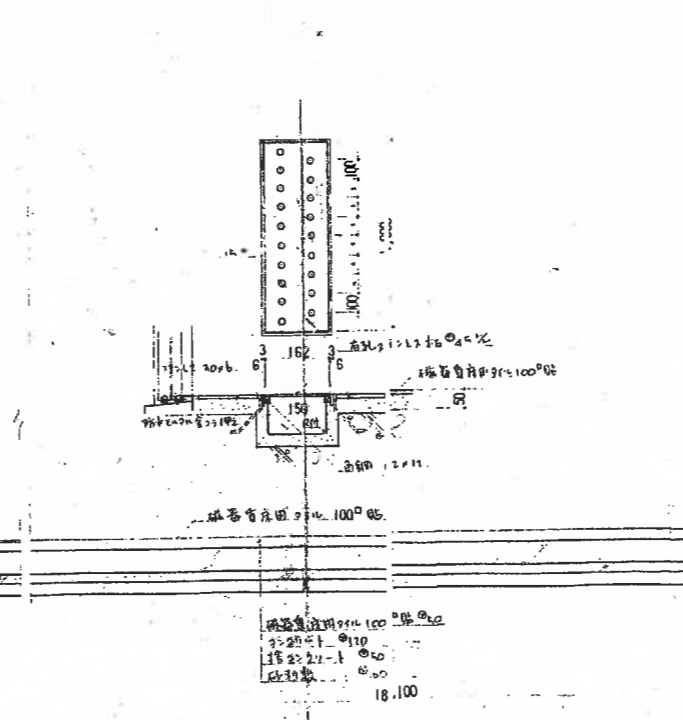
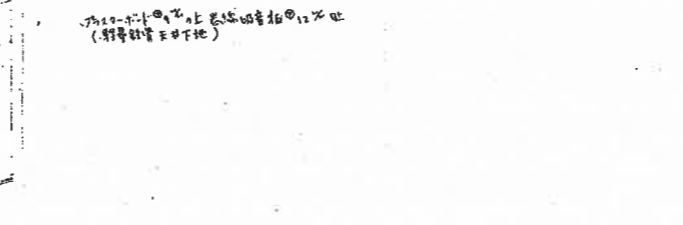
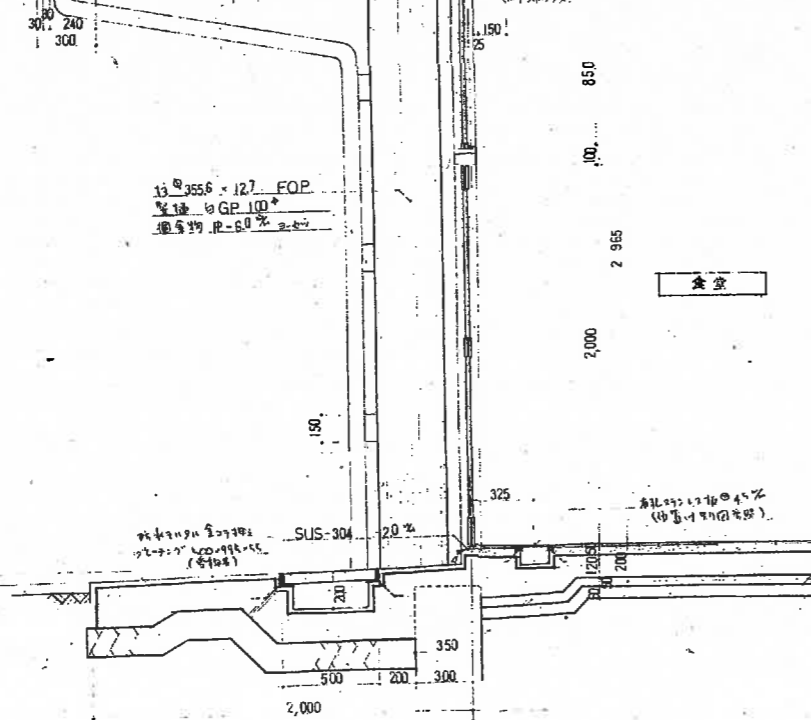
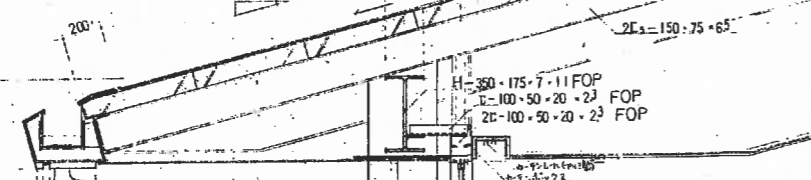
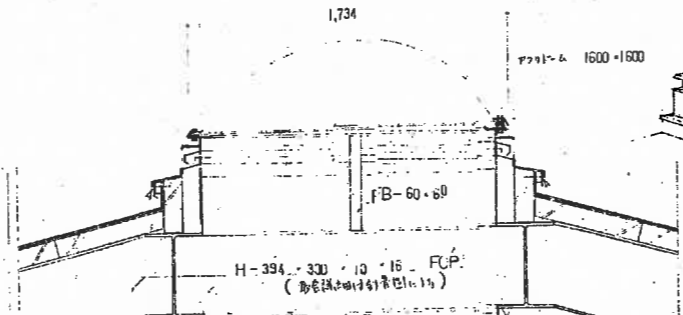
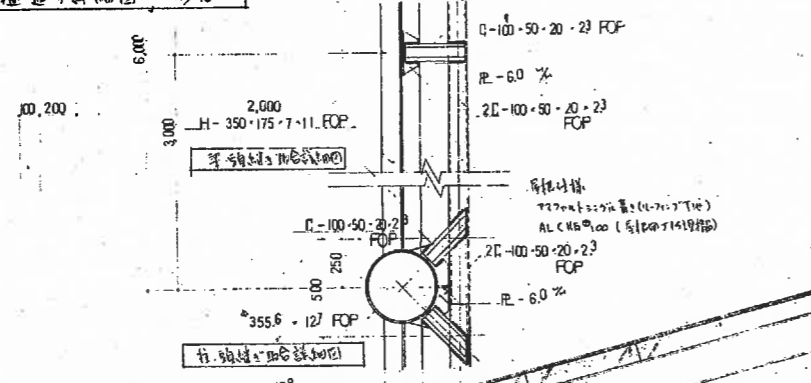
屋根伏図





屋根の詳図(2) 1/10

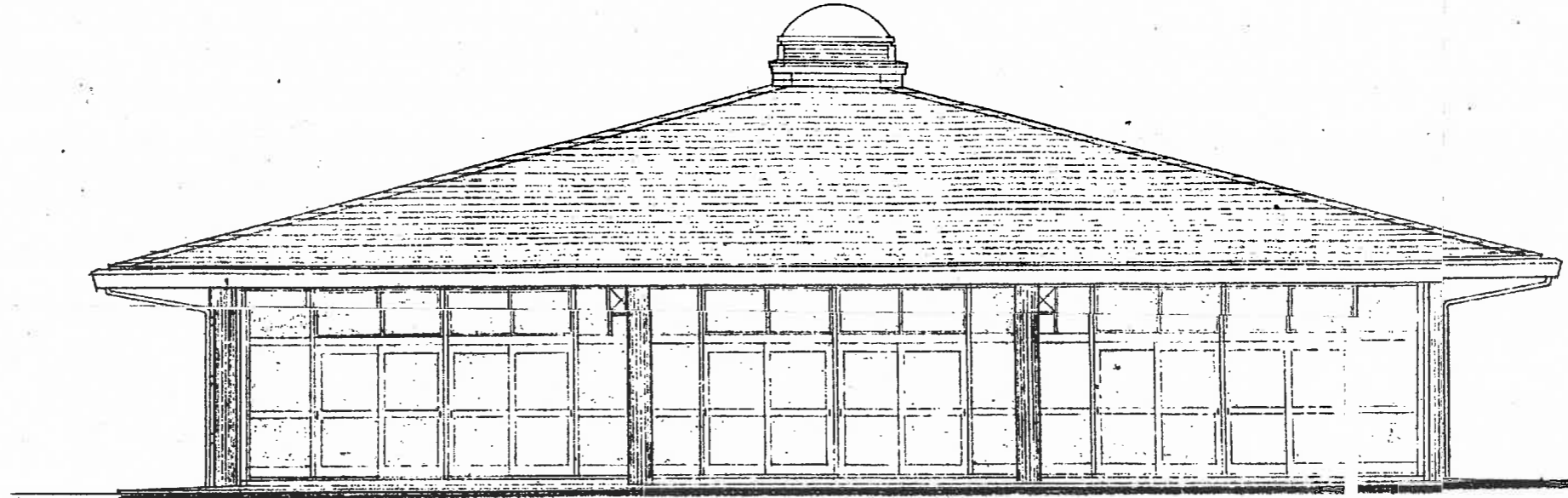
屋根の取付詳図(2) 1/10



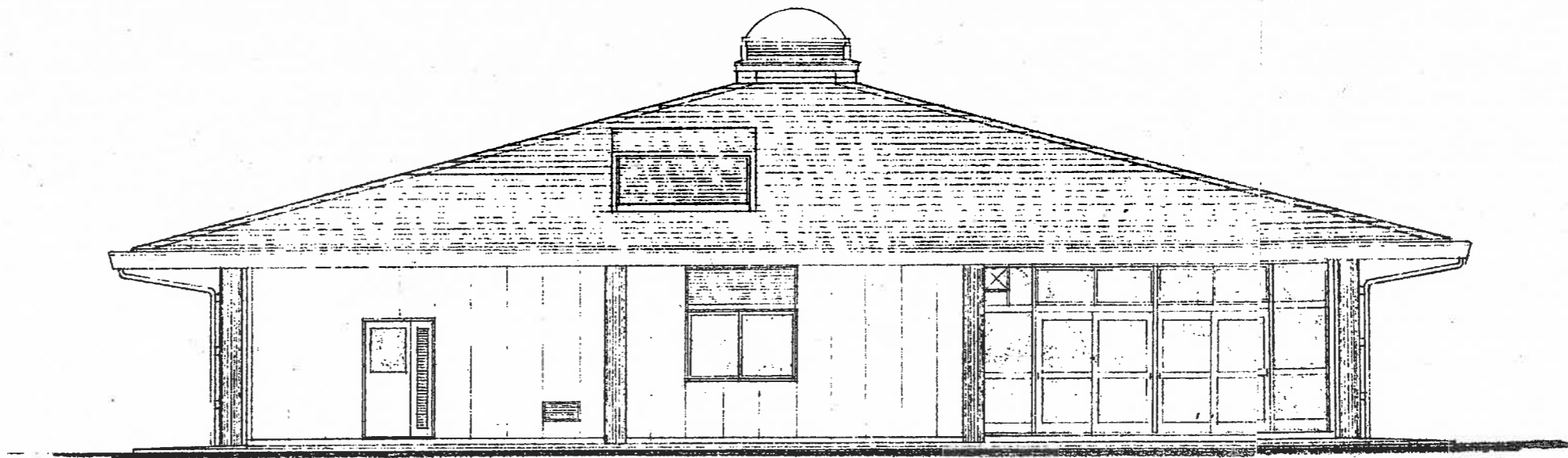
床面図 1/20

Y4

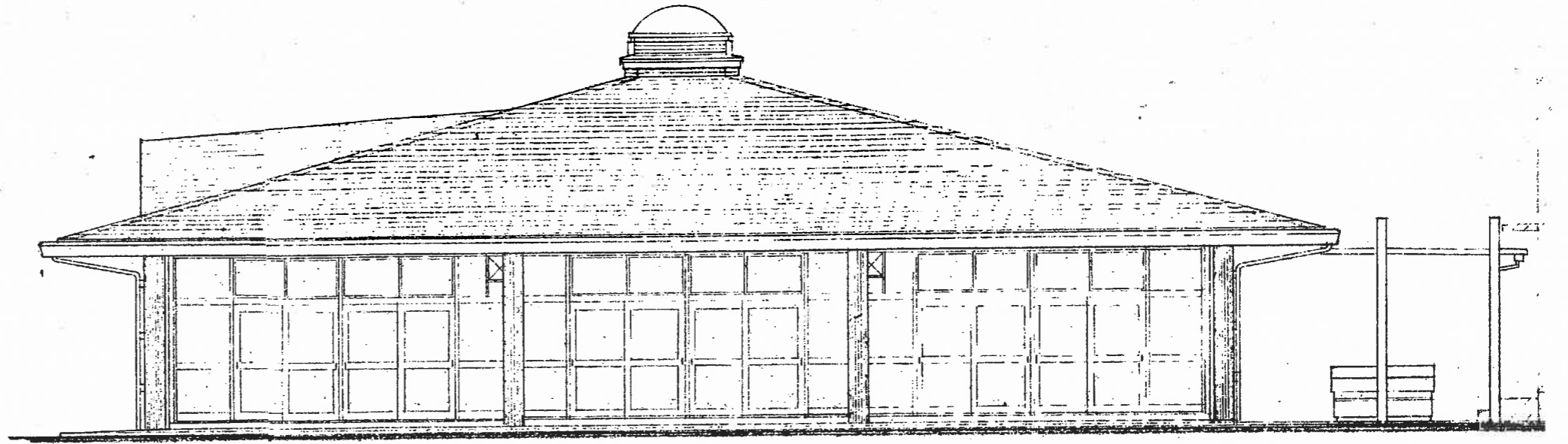
Y1



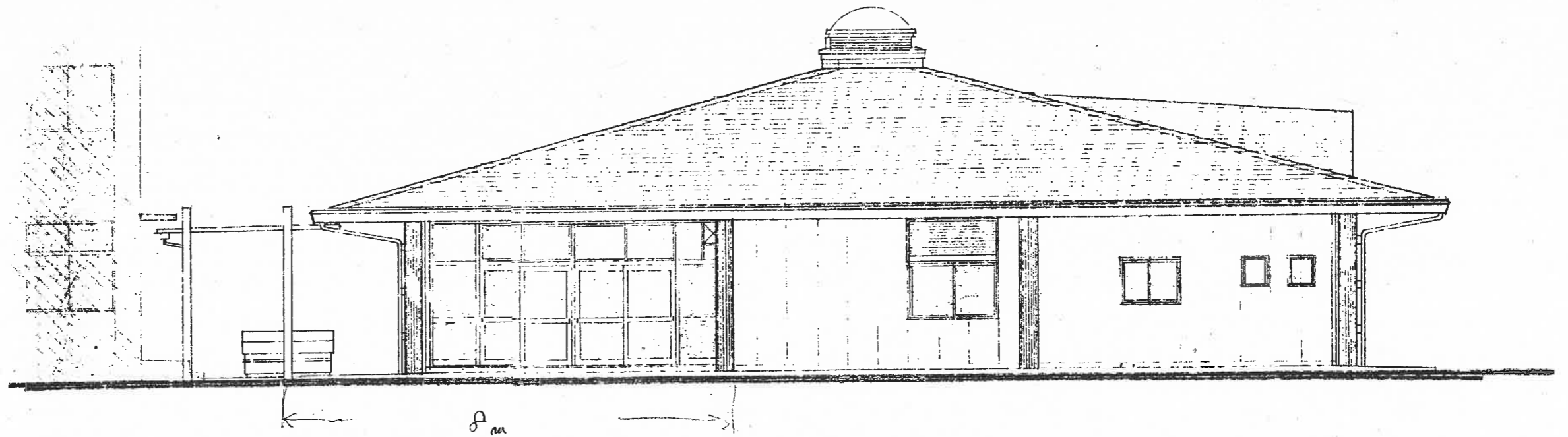
東 立面圖 1/100



西 立面圖 1/100



南 立面圖 1/100



北 立面圖 1/100