

## 4. Consumable parts

Please refer to Section 4, "Cleaning and maintenance", of your myAirvo 2 User Manual for information on consumable parts. myAirvo 2 has five parts which you will need to replace regularly to keep your device as clean as possible. The times recommended below assume your myAirvo 2 is only being used by one person, and rely on the correct cleaning procedures being followed.



**60** **Optiflow™+ nasal cannula**  
 Replace every 60 days.  
 Product code: MYOPT9SMALL (2-pack)  
 MYOPT9MEDIUM (2-pack)  
 MYOPT9LARGE (2-pack)



**60** **AirSpiral™ tube and auto-fill chamber kit**  
 Replace every 60 days.  
 Product code: MYAIRVOKIT1



**60** **Water bag**  
 Replace every 60 days.  
 Product code: 90OPT401 (2-pack)



**90** **Air filter**  
 Replace every 90 days or 1000 hours.  
 Product code: 90OPT913 (2-pack)



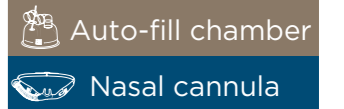
Some products may not be available in your country.  
 Please contact your local Fisher and Paykel Healthcare representative.

### Contact details for support and ordering

[www.fphcare.com/myairvo](http://www.fphcare.com/myairvo)

F&P, AirSpiral, myAIRVO, myAirvo and Optiflow are trademarks of Fisher & Paykel Healthcare Limited.  
 For patent information, see [www.fphcare.com/ip](http://www.fphcare.com/ip)

# myAirvo™ 2 Quick Start Guide



Important note: This is a Quick Start Guide only and should not be considered in any way a replacement for your myAirvo 2 User Manual. Before using your myAirvo 2 device you must read your myAirvo 2 User Manual to understand the device's intended use, warnings and cautions. myAirvo 2 is not intended for life support.

## 1. How to set up your device

Please refer to Section 2, "Setting up myAirvo 2", and Section 3, "Using myAirvo 2", of your myAirvo 2 User Manual for information on setup.

- 1** Place your myAirvo 2 on a low shelf or near the floor beside your bed. Make sure it is placed below your head height and flat.
- 2** a. Remove the blue port tabs and water supply tube holder.  
 b. Install the provided elbow adapter to the MR290 water chamber.  
 c. Clip the water supply tube into position.
- 3** Fit the water chamber onto your device by depressing the finger guard, pushing forward until the finger guard clicks into place.
- 4** a. Hang water bag from the home stand.  
 b. Push water supply tube spike into the fitting at the bottom of the water bag. Open vent cap.  
 c. Water will enter MR290 water chamber and be contained below the max water level line.
- 5** Attach the breathing tube to your myAirvo 2.
- 6** Plug myAirvo 2's power cord into the mains/utility power socket and into the rear of the unit.
- 7** Switch on myAirvo 2 by pressing and holding the On/Off button for 5 seconds.
- 8** myAirvo 2 will begin to warm up, displaying a warm-up symbol on the screen.
- 9** When myAirvo 2 is ready for you to use, a tick symbol will be displayed.
- 10** Connect your interface and begin therapy. During use, if excess condensate forms in the tube, refer to Condensate Management in Section 2, "Setting up myAirvo 2".

REF 612970 REV D 2021-10 © 2021 Fisher & Paykel Healthcare Limited

## 2. How to use your device

### 2.1 Buttons

Please refer to Section 3, "Using myAirvo 2", of your myAirvo 2 User Manual for information on how to operate your myAirvo 2.



#### On/Off button

The On/Off button turns myAirvo 2 on when held for 5 seconds. After use, press for 3 seconds to begin Drying Mode. Your device will turn off automatically after 99 minutes.



#### Audio Pause button

The Audio Pause button allows you to temporarily silence audio alarms.



#### Mode button

The Mode button allows you to cycle between modes:

- Temperature
- Flow Rate
- Day/Night
- Compliance



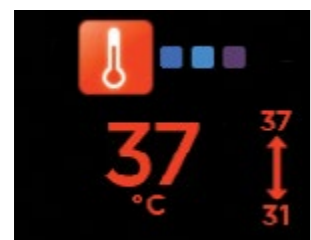
#### Up and Down buttons

The Up and Down buttons allow you to change settings within the following modes:

- Temperature
- Flow Rate
- Day/Night

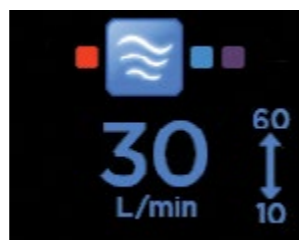
### 2.2 Modes and settings in default mode

Please refer to Section 3, "Using myAirvo 2", of your myAirvo 2 User Manual for information on how to operate your myAirvo 2. Your myAirvo 2 will remember your settings when switched off.



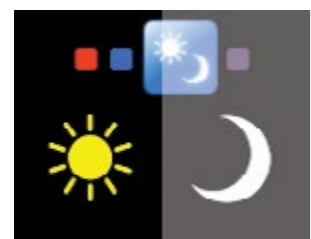
#### Temperature Mode

Use the Up and Down buttons to cycle between temperatures of 31 °C, 34 °C and 37 °C.



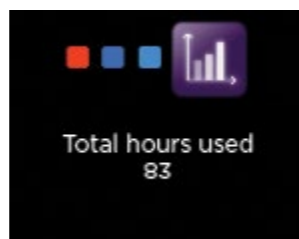
#### Flow Rate Mode

Use the Up and Down buttons to select your flow rate from 10-60 L/min. Please see your myAirvo 2 User Manual for information about flow ranges for your interface.



#### Day/Night Mode

Use the Up and Down buttons to cycle between Day Mode and Night Mode. In Night Mode some audio signals will become quieter and your display screen will dim.



#### Compliance Mode

Compliance Mode automatically cycles between device usage statistics:

- Total hours used
- Hours per day
- Checksum (for your clinician)

### 2.3 Alarms

Please refer to Section 3, "Using myAirvo 2", of your myAirvo 2 User Manual for information on alarms. Your myAirvo 2 has alarms to warn you about interruptions to your treatment. You can use the Audio Pause button to silence the alarm for 115 seconds.

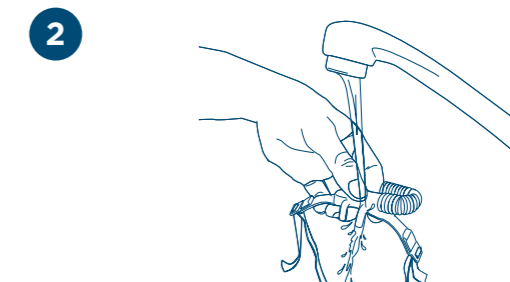
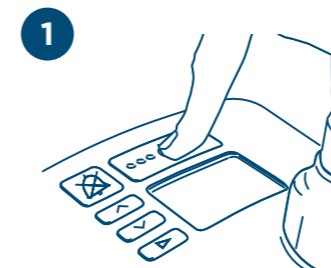
#### Audio Pause button



## 3. How to clean your device

Please refer to Section 3, "Using myAirvo 2", and Section 4, "Cleaning and maintenance", of your myAirvo 2 User Manual for information on how to clean myAirvo 2.

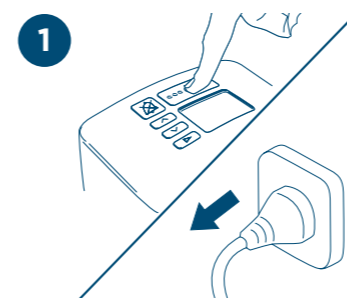
### 3.1 Daily cleaning



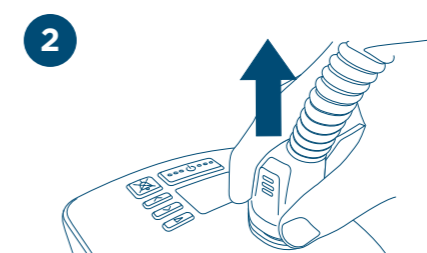
After use, remove your interface. To begin the 99-minute Drying Mode, press and hold the On/Off button for 3 seconds. To avoid burns, do not wear the interface during Drying Mode and do not remove the water chamber until Drying Mode is complete.

Rinse the interface in drinking-quality water then reconnect to the breathing tube whilst still in Drying Mode to dry the interface.

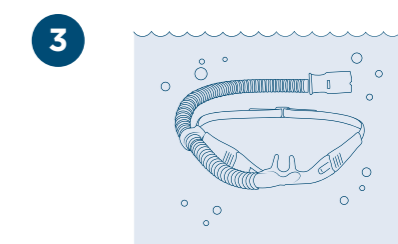
### 3.2 Weekly cleaning



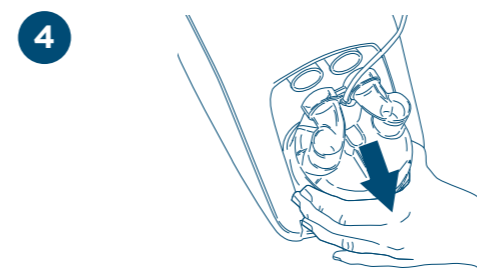
Switch off the unit and unplug from the mains/utility power socket.



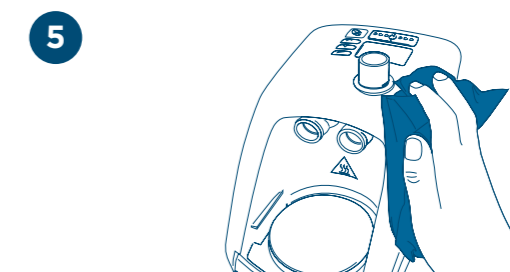
Remove the breathing tube and drain any excess condensate.



Remove the interface from the breathing tube, wash it in warm water with mild dishwashing detergent added, rinse it in drinking-quality water, then reconnect it to the breathing tube.



Remove water chamber. Carefully put the MR290 chamber aside.



Thoroughly wipe the inside of the breathing tube connection port with a clean, low-lint cloth dipped in warm water with mild dishwashing detergent added. Wipe the exterior of the unit with a clean damp (not wet) cloth dipped in warm water with mild dishwashing detergent added.

When cleaning is complete, set up your myAirvo 2 using the setup steps previously described.